



# ***34<sup>th</sup> North American Rail Mechanical Operations Seminar***

**March 19, 2013**

***Jerry Vaughn  
Chip Summey***

**Railinc Update**



# Agenda

- Railinc Overview
- 2013 Review
- 2014 Updates
- Where To Get Help

# The AAR-Railinc Partnership

## Mutually Beneficial Relationship Serving the Rail Industry

- Wholly-owned subsidiary of the AAR
- AAR provides industry insights and guidance
- Products and services driven by AAR committee structure and developed by Railinc experts
- Board of Directors made up of the senior technology officers of the Class I railroads & the President of AAR
- Railinc develops and manages critical industry data systems



## **Railinc Mission**

*Our mission is to create valued solutions for rail industry problems using our people, processes and technologies.*

## **Railinc Vision**

*Our vision is to become the rail industry's innovative, go-to resource for data and information systems.*





# Railinc Embraces Three Primary Values



**Collaboration**



**Results**



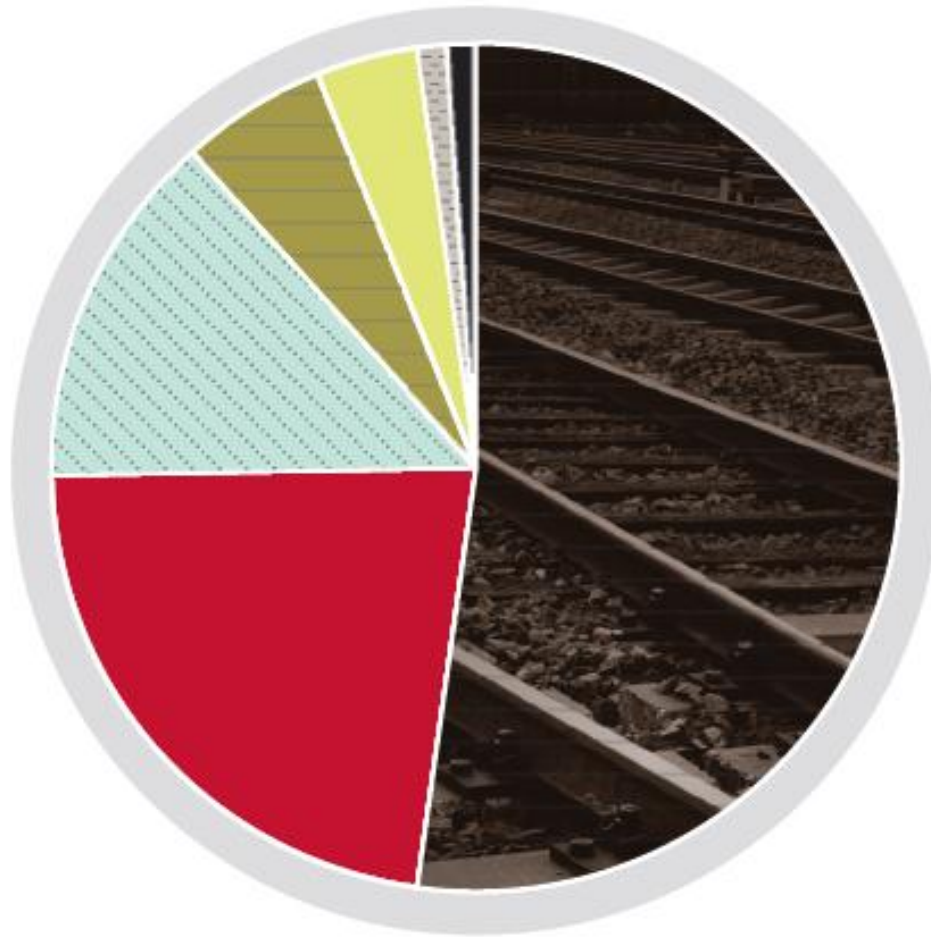
**Service**

## **Collaboration**

We collaborate with our teams and our customers to get the job done, respecting individual ideas and contributions and moving forward in pursuit of shared goals.



# Railinc Creates Valued Solutions For A Variety of Industry Customers



- 51.9%** Class I
- 21.9%** Private Car Owner
- 14.6%** Third Party
- 5.4%** Other Railroad
- 4.1%** Shipper
- 1.0%** Government
- 1.0%** Other Customers

# Railinc History

- 1960s:** UMLER, Commodity Codes (STCC)
- 1970s:** Car Hire, TRAIN, Data Exchange
- 1980s:** TRAIN II, Car Tracing Services
- 1990s:** Waybill Edit, Interline Settlement, Deprescription, Rate EDI Network, Car Hire Liability Expansion
- 2000s:** Car Repair Expansion, EHMS, Steelroads, RailSight, Embargoes
- 2010s:** DDCT, Component Tracking, AHSI, What Else?
  - Centralized Car Hire
  - Chicago Terminal Information System

# Railinc By the Numbers

## Railinc

- 32 product lines
- 40+ committees engaged
- 250+ personnel
- 27513 (Cary, NC)

## Daily

- EHMS – 3,000+ alerts opened
- 30,000 Umler™ updates
- 80,000 car hire interchanges
- 8+ million EDI messages

## Annually

- 2 million equipment units in Umler®
- \$1 billion in car repairs
- \$15+ billion in interline revenue settled





# Railinc Is Maturing the Program Model

- Railinc works closely with the industry to identify multi-year programs that will deliver the highest value from industry investments in 2014 and beyond
- Leverage multiple Railinc and industry capabilities to solve problems at the network level
- Targets and Metrics-driven to ensure measurable progress
- Continuous review and prioritization of program roadmaps
- Three current programs:
  - Asset Health Strategic Initiative - AHSI
  - Automated/Centralized Car Hire - CCH
  - Gateway Operations Services

# Asset Health Strategic Initiative

The multi-year, multi-phase AHSI program focuses on solving rail-network challenges related to asset health.

## Targets:

- Reduce mechanical-service interruptions
- Improving inspection quality
- Increase yard and shop efficiency

# Automated/Centralized Car Hire

The CCH program aims to reduce the industry burden of processing car hire. Still in its infancy, this program will leverage existing Railinc processes to simplify, automate and centralize car hire administration and, ultimately, offer stakeholders an alternative to mainframe system replacement.

## Targets:

- In Discussion

# Gateway Operations Services

The program aims to help rail operations personnel at gateways better manage traffic conditions. The 2013 and 2014 work is focused on Chicago but keeping an eye out for reuse at other gateways.

## Targets:

- In Discussion





2013 ANNUAL REPORT

# 13

# 2013 RPSWC Approved Projects

Project Investment Categories	2013 Industry Project Name
Asset Health Strategic Initiative	Asset Information Repository (Phase 1)
	Inspection Quality (Phase 1)
	E-Train (Phase 1)
	Create Mechanical Reference Repository
Asset Health	Shipper Reject Reason Visibility and Tracking
	Asset Health Data Summary Expansion
	Locomotive Inspection and Repair Report
Car Hire Admin. Cost Reduction	Car Hire Liability File Expansion and Mileage
	Car Hire Rule 4 Reclaim Centralization
	Car Hire Rate Negotiation Self-Service <i>(continued)</i>
Interline Operations, Interline Revenue, and Roadmap Analysis	Major Terminal Bulletin Exchange Automation
	Interline Settlement System EDI 6040 Upgrade
	Roadmap Analysis

# Twelve Industry Projects Completed

- 4 AHSI program projects
- 3 Asset Health Projects
- 3 Car Hire Projects
- 1 Gateway Services program project
- 1 EDI upgrade for the Interline Settlement System (ISS)

# 2013 AHSI Program Projects

## **Mechanical Reference Repository - EHMC**

- Created a common repository for current and historical operational reference data and provided and automated means for its use. Developed an online QA application.

## **Asset Information Repository (Phase 1) - AHTF**

- Created the foundation for a comprehensive, equipment-level view of asset health and characteristic data.

## **E-Train (Phase 1) - AHTF**

- Created the foundation for a centralized database of train information that will enable real-time visibility and analysis of consist data to reduce manual work, improve efficiency and enable better decision making around maintenance and repair tasks.

## **Detector Repository — Inspection Quality (Phase 1) - AHTF**

- Completed the initial work for a comprehensive database of detector reads to improve repair-work efficiency and enable the complete health monitoring of equipment.



# 2013 Asset Health Projects

## **Locomotive Inspection and Repair Report - LRB**

- This project created an electronic locomotive inspection and repair report to reduce the time required to verify inspections.

## **Asset Health Data Summary Expansion - EHMC**

- This project combined detector reads that do not reach the level of an alert in a summarized EHMS view to improve data analysis and reduce derailments.

## **Shipper Reject Reason Visibility and Tracking – DDCT/CSC/EAC**

- The Shipper Reject Reason Visibility and Tracking project expanded the Damaged and Defective Car Tracking (DDCT) system to include information from shipper rejects.

# 2013 Car Hire Projects

## **Car Hire Rate Negotiation Self-Service - EAC**

- This project enhanced the self-service capabilities of the Deprescription and Bid and Offer tools to improve ease of use, provide near real-time visibility into bids and offers, and perform validation checks with supporting data.

## **Car Hire Rule 4 Reclaim Centralization - EAC**

- This project removed the administrative burden associated with car hire reclaims.

## **Car Hire Liability File Expansion and Mileage - EAC**

- This project expanded the functionality in the current Car Hire Liability File to include car hire rates, mileage, loaded and empty cycles, and other data, with appropriate confidentiality protocols. It reduces the work required by railroads to calculate car hire.

# 2013 Gateway Services & Interline

## **Major Terminal Bulletin Exchange Automation - CTCO**

- This project created an automated, easy-to-use bulletin request system for the Chicago Terminal. It will reduce train departure delays and enable expansion of the system to additional terminals.

## **Interline Settlement System® EDI 6040 Upgrade – Interline Revenue Committee**

- This upgrade delivered business process improvements for the Interline Settlement System.

# Other 2013 Notables

- Disaster Recovery Program Initiated (supports data integrity and operational continuity)
- Mainframe migration initiative (increases future value opportunities from leveraging cross-system capabilities)
- CRB – Component ID error enhancements
- EHMS/EHV - Additional detector information in Equipment Health view (more data available to aid in operational decisions)
- DDCT - Possession check and reject ADV (increases usability of system to adapt to real-life scenarios)





©2014 Railinc. All Rights Reserved.

# 14

# 2014 RPSWC Approved Projects

Project Investment Categories	2013 Industry Project Name
Asset Health Strategic Initiative	Asset Information Repository (Phase 2)
	Inspection Quality (Phase 2)
	E-Train (Phase 2)
	Asset Health Mechanical Reference Repository (Phase 2)
	AEI Data Quality (AIR, Inspection Quality Roadmap)
	Location Master (AIR Roadmap)
Asset Health	Expand DDCT Rule Compliance
	Component Tracking Brake Valves
Centralized Car Hire	Centralized Car Hire Foundation (User Support)
	EDI 432 Upgrade (Car Hire Rate Negotiation EDI Message)
Gateway Operations Services	Major Terminal Bulletin Exchange Automation (Phase 2)
	Major Gateway Decision Support
Interline Operations, Interline Revenue	Forward & Store EDI Upgrade (Waybills)
	Industry Reference Files EDI Upgrade

# *AEI Data Quality (2014)*

Railinc Business Lead: Ron Tsolis

TAG Leads: TBD

## Overview:

- Develop processes to address equipment and reporting issues associated with Automated Equipment Identification (AEI) that are identified in movement event data.

## Themes:

- Aggregate and analyze industry data to identify equipment with incorrect or missing AEI tags
- Develop process to identify and correct Umler reporting discrepancies related to AEI
- Develop AEI metrics to support improved inspection quality through AEI data quality as well as increases in yard and shop efficiency through efficient repair and reporting of AEI tags.

## Next Steps:

- Complete 2013 Location study
- Engage industry subject matter experts
- Set up TAG and project teams



# *Location Master (2014)*

Railinc Business Lead: Ron Tsolis

TAG Leads: TBD

## Overview:

- Map various types of location-related data in a common taxonomy that is required for AHSI scenarios, industry data sharing, and railroad systems.

## Themes:

- Develop Railroad-to-Railroad location mapping
- Develop mapping between various types/sources of location data

## Next Steps:

- Complete 2013 Location study
- Engage industry subject matter experts
- Set up TAG and project teams



# *Component Tracking – Brake Valves (2014)*

Railinc Business Lead: Jerry Vaughn

TAG Leads: Air Brake Committee

## Overview:

- Leverage the "reusable" framework developed in 2011 to register and associate two additional components: 1) Emergency and 2) Service portion of the brake system.

## Themes:

- Define Data Glossary for each component
- Enable registration for each component
- Enable association for each component
- Define business rules to ensure data quality with proper registration and association
- Industry communication: Education and Training

## Next Steps:

- Project kick-off in January

# *Expand DDCT Rule Compliance (2014)*

Railinc Business Lead: Chip Summey

TAG Leads: DDCT TAG

## Overview:

- Provide a flexible workflow framework that can be used to create and receive car disposition requests originating multiple AAR rules scenarios in a standardized format.

## Themes:

- Modify DDCT workflow engine to allow for new rules and workflow scenarios to be added to the DDCT engine. Will implement Rule 96 as part of the project.
- Modify DDCT workflow engine to allow for customized incident management options
- Create administrative functionality to enable dynamic changes to the DDCT engine based on new and future rule changes.
- Modify DDCT input/output messages to conform to the workflow engine changes and to send/receive new inputs.

## Next Steps:

- DDCT TAG meeting and envisioning: November 12-13
- Project kick-off in January



# Umler

- Locomotive Blue Card
  - New elements and inspections will go out in TRAIN II in July
  - Additional enhancement in 2014
- Added a new element for Air Hose Arrangement
- System Validation Task Force
- CPC -1232 Flag – 25,369 (excluding Pre-registered)
  - 211s no longer qualify
  - **Action: Update your tanks with new conditionally mandatory fields**
- Reflectorization information

# CPC - 1232

## Mandatory Elements and Values:

- A237 Shipping Container Specifications Stenciled begins with “111”
- A264 Top Fittings Protection = “E” Equipped M1002 Appendix E10.2
- B105 Head Protection Shield Thickness  $\geq 0.5$
- B203 Tank Head Material Norm = “Y”
- B208 Tank Shell Material Norm = “Y”

# CPC - 1232

A car must also have one of these interdependent combinations:

	B204 Tank Jacket Material	A118 Head Protection Type	A257 Tank Shell Material Spec =	A258 Tank Shell Thickness >=	A254 Tank Head Material Spec =	A255 Tank Head Thickness >=
1	N or T	F	128B	0.4375	128B	0.4375
2	N or T	F	51670	0.5	51670	0.5
3	U	F or H or T	128B	0.5	128B	0.5
4	U	F or H or T	51670	0.5625	51670	0.5625
5	N or T	F	5167128	0.5	51670 or 128B	0.5
6	U	F or H or T	5167128	0.5625	51670 or 128B	0.5625
7	N or T	F	240304 240304L 240316 240316L	0.4375	240304 240304L 240316 240316L	0.4375
8	U	F or H or T	240304 240304L 240316 240316L	0.5	240304 240304L 240316 240316L	0.5

\*Situations 7 and 8, Element Value A254, are CPC-1232 Compliant when B203 & B208 are not "Y"



# Umler ReflectORIZATION: AAR Rule 66, Reflective Sheeting

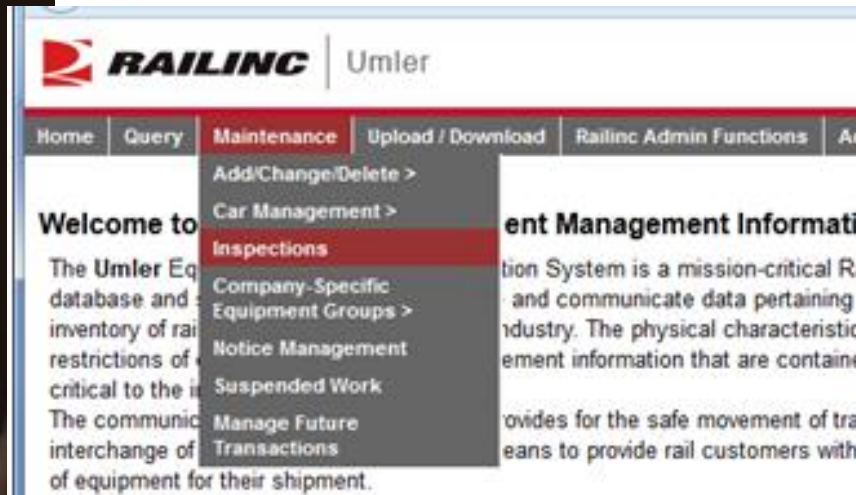
- Circular C-11990 was issued on 17 July 2013 to remind the industry of relevant deadlines
  - All new and rebuilt cars must currently report reflectorization in order to have a status of “Active” in Umler.
  - All cars must report reflectorization by 28 November 2015.
  - Cars that do not report reflectorization by 28 August 2014 will be placed in MA status.
  - Cars with an FRA waiver (B096 = “W”) are exempt from the above rules.

# Umler ReflectORIZATION: Umler Committee Review

- Umler versus Car Repair Billing (CRB) Job Codes 5500 and 5502 since 2006
- 12,264 cars with CRB records indicating reflectORIZATION of some kind but with no corresponding reflectORIZATION reported in Umler. (Note, some of those cars have been deleted from Umler.)

# Reporting ReflectORIZATION in Umler

- From Umler Home page select Maintenance and then Inspection
- Select ReflectORIZATION Event from the list of Inspections



## Inspections

[AFMC Inspection](#)  
[Air Brake Test](#)  
[Autorack Certification](#)  
[Autorack Inspection](#)  
[Autorack Repair](#)  
[Car Grade Inspection](#)  
[Door Lube Inspection](#)  
[Locomotive Air Brake L1 Inspection](#)  
[Locomotive Air Brake L2 Inspection](#)  
[Locomotive Air Brake L3 Inspection](#)  
[Locomotive Air Card Inspection](#)  
[Locomotive Annual Inspection](#)  
[Locomotive Cab Signals Inspection](#)  
[Locomotive Event Recorder Inspection](#)  
[Locomotive Hand Brake Inspection](#)  
[Locomotive Inspection Due Date Update](#)  
[Locomotive Out of Service](#)  
[Locomotive Periodic Inspection](#)  
[Locomotive RCL Inspection](#)  
[Locomotive Storage Event](#)  
[OMI Daily Inspection](#)  
[ReflectORIZATION Event](#)  
[Vehicular Flat Car Certification](#)

# Reporting Reflectorization in Umler

- Populate all fields on the screen and select Validate, then Submit
- The system loads the event to the Umler Record

## Reflectorization Event



Validation succeeded. Click the Submit button to apply the data to the system.

\*Equipment ID(s):

RAIL231

\* Inspection Reporter :

RAIL ▼

\* Inspection Performer :

RAIL ▼

\* Inspection Date Done :

03/07/2014 ▼

\* Location/SPLC :

411657000 🔍 ▼



# Reporting Reflectorization in Umler

- You can verify via the Umler Record

- <a href="#">Reflectorization Event</a>			
Element Name	ID	Flag	Value
Inspection Date Done	<a href="#">DTDN</a>		03/07/2014
Inspection Performer	<a href="#">PERF</a>		RAIL
Inspection Reporter	<a href="#">REPT</a>		RAIL
Location/SPLC	<a href="#">SPLC</a>		411657000



# Agenda

Railinc Overview


2012 Review

2013 Updates


## **Where To Get Help**


- Training session tomorrow Morning
- Customer Service Department
- [www.Railinc.com](http://www.Railinc.com)

# www.Railinc.com



Sign In | Careers | Contact Us

[ABOUT RAILINC](#)[PRODUCTS & SERVICES](#)[COLLABORATION](#)[REFERENCE FILES](#)



Every day and every night.

### QUICK LINKS

- [CEPM Project Site](#)
- [DDCT System Project Site](#)
- [Railinc IRFI Website](#)
- [Embargoes and Permits Site](#)
- [Merger and Acquisition Notices](#)
- [Careers at Railinc](#)

### WELCOME TO RAILINC.COM

Railinc is the railroad industry's most innovative and reliable resource for IT and information services. We support business processes and provide business intelligence that help railroads and rail equipment owners increase productivity, achieve operational efficiencies and keep their assets moving.

### RAILINC SHORT LINE INDEX

February 2013 - 335,067
February 2012 - 326,457

Carloads Up Three Percent, Coal & Metallic Ores Lead Gains  
[See details](#)

### UMLER EQUIPMENT INDEX

4th Qtr 2012 - 1,964,205
3rd Qtr 2012 - 1,960,199

North American Fleet Size Remains Steady During 4th Quarter 2012  
[See details](#)

### ACCOUNT ACCESS


GO

User ID:

Password:

Sign In


[Register Here](#)  
[Forgot User ID?](#)  
[Forgot Password?](#)



### PRODUCTS & SERVICES

#### RailSight

Greater visibility. Better tracking. [Learn more here.](#)



### REFERENCE FILES


#### FindUs.Rail

Quickly find critical contacts from across the rail industry.

### CONTACT US

#### CUSTOMER SUPPORT CENTER

1-877-RAILINC  
[csc@railinc.com](mailto:csc@railinc.com)



7001 Weston Parkway  
Cary, NC 27513  
(877) 724-5462

# *Questions?*

## ***Railinc Customer Support***

*P: (877) 724-5462*

*E: [csc@railinc.com](mailto:csc@railinc.com)*

*W: [www.railinc.com](http://www.railinc.com)*

**CUSTOMER  
SUPPORT  
CENTER**  
**1-877-RAILINC**  
[csc@railinc.com](mailto:csc@railinc.com)



©2014 Railinc. All Rights Reserved.






# Appendix



# Your Launch Pad

1

Launch Pad2

Signed in as NUEVOGAL | Sign Out | Launch Pad | User Services | Contact Us3

4

**Your Applications**5

Umler Maintenance

Umler Release

UMLER/EMIS Training

**User Services**6

**My Profile Management**

- [Edit My Profile](#)
- [Change Password](#)
- [View/Request Permissions](#)
- [Check Status of Permission Requests](#)
- [User Guide](#)

**Your Notifications**7

Current Notifications | Past Notifications

Date	Type	Subject
07/23/2010 0000 EDT	System Wide	<a href="#">Railinc System Wide Notification Testing</a>

**Your Support Cases**8

Your Open Cases | All Your Cases

Showing 1 - 2 of 2 results. Page 1 of 1 | First | Previous | Next | Last

Case #	Last Updated	Title	Status
2434	9/3/10 2:01 PM	Change Submit to Save	Active
2431	9/2/10 1:15 PM	Return from Application to	Active

Customer Support 1-877-RAILINC  
Support Hours: Monday - Friday, 0700 - 1900 Eastern Time

Create a New Case

**Your Subscriptions**9

Application	Type	
Umler Release	Planned Maintenance	<a href="#">[unsubscribe]</a>
Umler Maintenance	Planned Maintenance	<a href="#">[unsubscribe]</a>
UMLER/EMIS Training	Planned Maintenance	<a href="#">[unsubscribe]</a>

[Subscribe to more....](#)

10 legal notices | privacy rights | terms of service | contact us

Copyright © 2010 Railinc. All rights reserved.

## PRODUCTS & SERVICES

Products and Services Overview

Car Accounting

CEPM Project

Damage Prevention and Loading Services

Early Warning

Equipment Health

Equipment Repair

Financial Data Exchanges

Letters of Authorization

Mergers and Acquisitions

Messaging

Publications

Railroad Clearinghouse

Reference Files

Tracing Products

Transportation Management

[Products & Services](#)

### Product and Service Overview

Railinc is an integral part of the North American rail industry. We maintain extensive industry databases, build critical applications and provide business intelligence services for railroads and their partners. Our systems and services support railroads, equipment owners, shippers and suppliers along every link of their supply chains. Class I, short line, regional railroads, and transportation professionals alike use Railinc's tools and information to manage and analyze their rail traffic.

Use the links below to view Railinc products and services.

#### Car Accounting:

[Car Hire Accounting Rate](#)

#### Damage Prevention and Loading Services:

[Damage Prevention and Loading Services](#)

#### Early Warning:

[Early Warning System](#)

#### Equipment Health:

[Equipment Health Management and Defective Car Tracking](#)

#### Equipment Repair:

[Billing Repair Card, Car Repair Billing \(CRBX\), Car Repair Billing](#)

#### ACCOUNT ACCESS

User ID:

Password:

[Sign In](#)

[Register Here](#)  
[Forgot User ID?](#)  
[Forgot Password?](#)



PRODUCTS & SERVICES

**RailSight**

Greater visibility. Better tracking. Learn more here.

Guide to help your organization learn to use the DDCT system. Use the menu below to navigate to important DDCT resources.

#### DDCT Resource Pages

- [Get Ready for DDCT](#)
- [DDCT System Capabilities](#)
- [DDCT Training Information](#)
- [DDCT User Guide](#)
- [DDCT Training Demos](#)

See links below for the User Guide, a DDCT Overview, presentation and answers to FAQs.

Last updated January 22, 2013.

#### Related Links

- [DDCT Overview](#)
- [DDCT User Guide](#)
- [DDCT Presentation](#)
- [DDCT Frequently Asked Questions](#)

# Thank You For The Trust You Place In Railinc



[Sign In](#) | [Careers](#) | [Contact Us](#)



**ABOUT RAILINC**

**PRODUCTS & SERVICES**

**COLLABORATION**

**REFERENCE FILES**



Railinc is there for you.

## QUICK LINKS

- [DDCT System Project Site](#)
- [Railinc IRFi Website](#)
- [Embargoes and Permits Site](#)
- [Merger and Acquisition Notices](#)
- [Careers at Railinc](#)

## Welcome to Railinc.com

Railinc is the railroad industry's most innovative and reliable resource for IT and information services. We support business processes and provide business intelligence that help railroads and rail equipment owners increase productivity, achieve operational efficiencies and keep their assets moving.

## ACCOUNT ACCESS

User ID:

Password:

**Sign In**

[Register Here](#)

[Forgot User ID?](#)

[Forgot Password?](#)



**PRODUCTS & SERVICES**

**RailSight**

Greater visibility. Better tracking. Learn more here.



**REFERENCE FILES**

**FindUs.Rail**

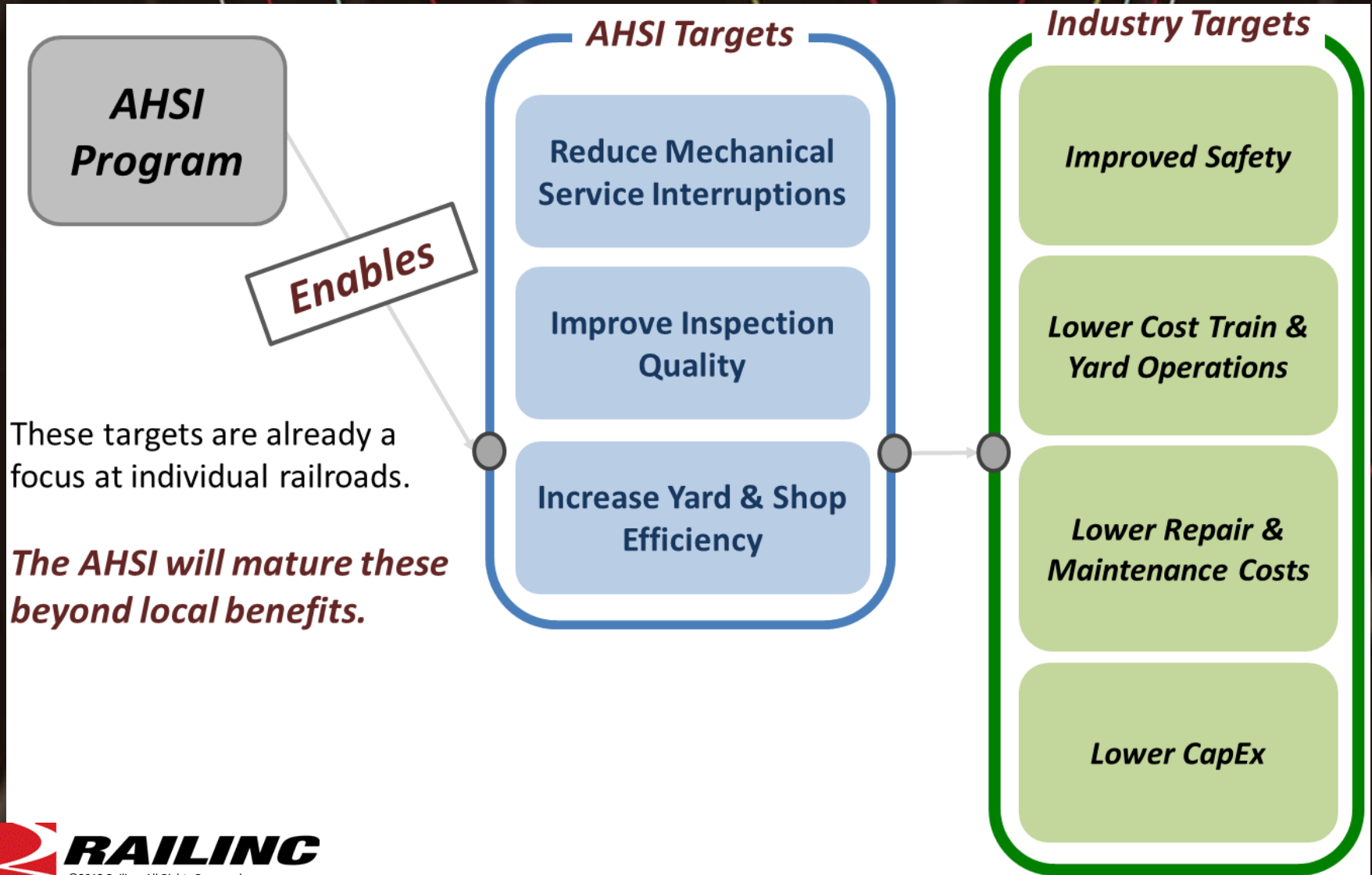
Quickly find critical contacts from across the rail industry.



©2014 Railinc. All Rights Reserved.



# Asset Health Strategic Initiative



# ***Asset Health Strategic Initiative***

## The Asset Health Strategic Initiative (AHSI) Program:

- A multi-year industry program to improve key industry operational measures
- Solving problems that need a network view of asset information and industry coordination
- Centralized accumulation and availability of asset data supported by central site tools, expertise, and rules

*Projects under the program will be submitted and vetted yearly*



# ***Potential Mechanical Projects***

- DDCT Enhancements
  - Enable Standardized Car Distribution
  - Car Owner Shop Preference
  - Mechanical Joint Inspection Certificate
  - Shipper Reject Reason Visibility and Tracking

## ***Future Mechanical Projects***

- System Automation
  - Improved Handling of Car ID Changes
  - Automated Component Failure Reports
  - Locomotive Inspection and Repair Report
  - Create Mechanical Reference Databases

## ***Future Mechanical Projects***

- Repair and Billing
  - New Asset Health Data Summaries and Support
  - Real Time Car Repair Billing Reporting
  - Enable Car Owner Repair Instructions
- Umler
  - Industry Bar Code Services
  - Railcar Life Mileage
  - Tank Car Valves and Fittings
  - Truck System Capture in Umler

- **Data Backfill:** The purpose of the data backfill is to decipher historical data and register historical wheel-sets including all available information like manufacture, applied and removed dates. This theme will provide functionality to accomplish data backfill.
- **Provide Data for CRB Automation:** Combine information from Umler's Equipment Registry and Component Registry with Car Repair Billing Job Codes to provide data for CRB automation on both the applied and removed side.
- **Recall Automation:** Automate the capability to create an Early Warning based on specific recall criteria for a component. Enable communication of the recall criteria to the Component Registry to flag components as recalled. Equipment associated with flagged components will automatically be added and removed from Early Warnings based on its association status and registration details in the Component Registry.
- **Advanced Query:** Enable specific metadata-driven queries on component registration data to facilitate the access to the Component Registry for data extraction. These criteria might include date-based searches and other component or company specific attributes. This feature will also enable sorting of data and additional output formats.
- **Notifications:** Provide the ability to generate notifications when pertinent event occurs e.g., notification to the car owner when a component is removed.
- **Mileage Design Document:** Create a design document that supports the intent to derive mileage for the life of a car and associated CEPM components.





# What We Value



## Collaboration

Focus on getting job done with our external and internal teams

## Results

Deliver on our promise to create industry value  
Implement enhancements, new products

## Service

Adapt to industry and customer needs  
Create tools that meet customer needs

# Do You Know?

Hint

Hint

Answer

39 CRB, ARB

Committees Engaged

8 Million Waybills, 426s,  
418s

EDI Messages / Day

15 Billion Revenue

Revenue Settled / Year

# RPSWC: Current Committee Members

Chair	Name	RR	Title
	Dave Ebbrecht	KCS	Executive Vice President & COO
	Tim Ziethen	Amtrak	Group Information Officer - Operations
	Jo-ann Olsovsky	BNSF	VP Technology Services & CIO
	Mack Barker	CN	VP Network Transportation
	Scott Sutherland	CPR	AVP Operations, Analysis Operations System
	Cressie Brown	CSX	VP Service Design and Advanced Technology
	Fred Ehlers	NS	VP Network and Service Management
	Jason Hess	UP	VP National Customer Service

# Railinc Project Support Working Committee

Established in 2010 with the mission to:

***Maximize Business Process Understanding and the Communication Link between the Industry Business Stakeholders and Railinc***

Three primary roles:

1. Act as **Ultimate Sponsors for Industry Initiatives**, Interfacing with SOMC and Home Road Decision Makers
2. **Prioritize** Railinc's Industry (AAR) Product Investment and Ensure that Industry Needs are Supported
3. **Commit** to Home Road Finance and Resource Support for Approved Projects

# 2014 RPSWC Objectives

- A. Champion great industry product work.
- B. Select and prioritize the industry product portfolio to ensure that industry product work has business case benefits and the appropriate level of commitment.
- C. Align Railinc work with customer/carrier needs.



## RPSWC

January 8

Plan and Schedule

April 24

Preliminary Pipeline  
Review

1

June 11

Initial Prioritization

2

August 21

Selection and  
Prioritization

3

October 10

Budget  
Review/Allocation

December 5

Process  
Review/Assessment

# Project Selection Process

## Opportunity Definition 1:

General Info, Sponsor, Type, Value Proposition, Railroad Requirements, Preliminary Total Railinc Project Cost

## Opportunity Definition 2:

Previous Information Refined, with Scope  
(Themes correlated with anticipated business benefits)

## Business Case:

Previous Information Refined, with Scope  
Measures of Success, Industry Summary Financial Analysis  
, Supporting Information